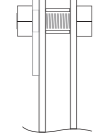
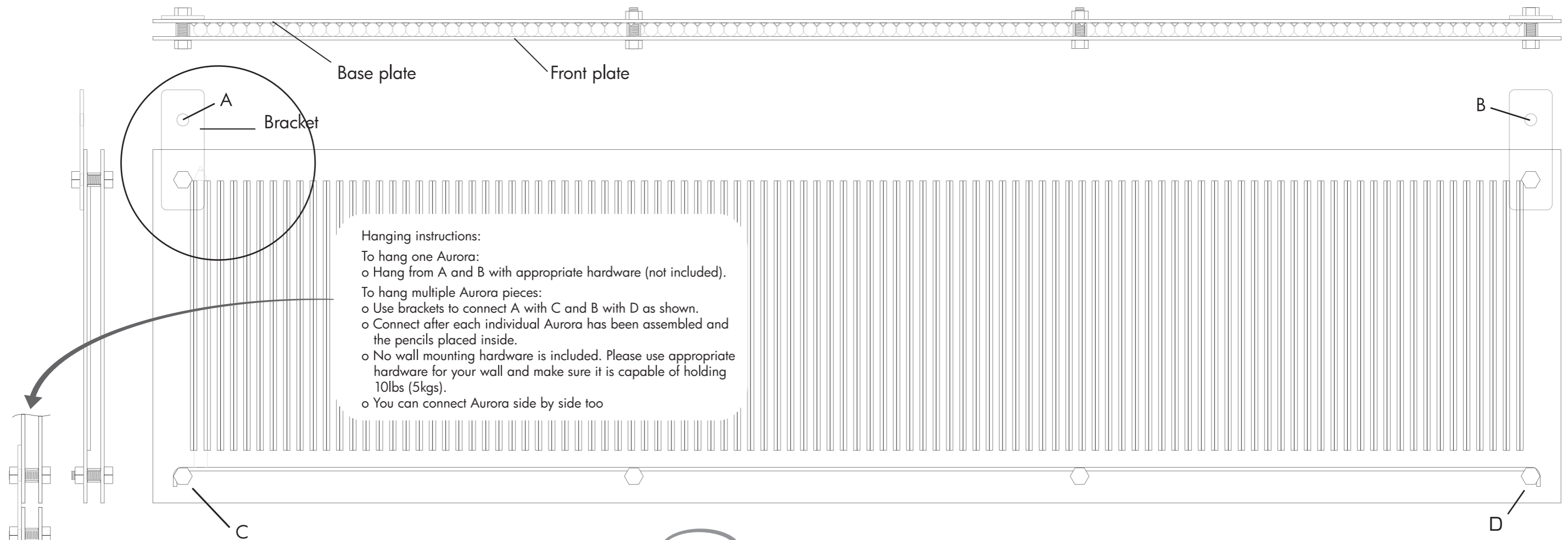


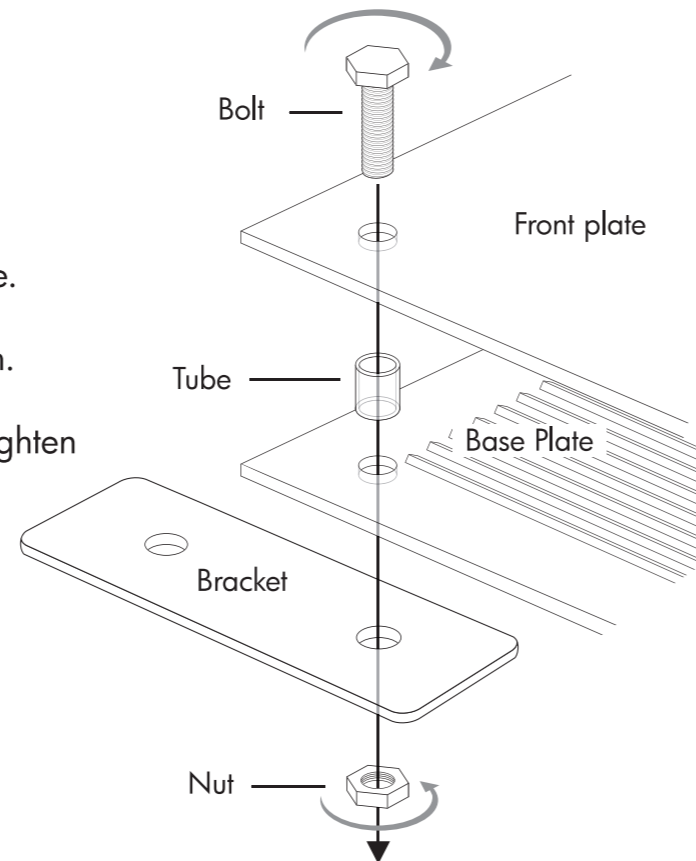
Aurora Assembly Instruction



1. Review all parts to make sure there is no damage. Plastic parts are fragile so please handle with care.
2. Peel all the protective plastic layers.
3. To assemble, use a hand-held 10mm socket wrench. Do NOT use power tools to assemble the Aurora.
4. Place tubes in between front and base plate and tighten with bolts and nuts.

Parts included:

- 1 x Base plate
- 1 x Front plate
- 6 x Bolt and nut
- 6 x Tube
- 2 x Bracket



IMPORTANT: Please read



- Insert pencils from top after Aurora is assembled.
- When hang on wall, please find appropriate hooking device for your wall.
- Keep Aurora out of reach from children.
- Do not store or place Aurora in place with high humidity such as bathroom, or close to source of heat.
- Placing pencils in direct sunlight or close to light will fade color of pencils.
- Tighten bolts periodically.
- Remove Aurora from wall when taking pencils out. Let them slide out by tilting it.
- Do not use Aurora for other than intended use for the pencils.
- Please do not modify Aurora.
- Stop using Aurora when cracked

Cleaning:

- Wipe clean with soft cloth. Please do not use alcohol-based solution. Aurora can be scratched when wiped strongly.